



TK International  
020 7794 8700  
www.t-k.co.uk

Residential Sales  
Residential Lettings  
Property Management

Sales Office:  
9 Heath Street  
Hampstead  
London NW3 6TP  
E: sales@t-k.co.uk

Lettings Office:  
16-18 Heath Street  
Hampstead  
London NW3 6TE  
E: lettings@t-k.co.uk

tk.international  
TK International  
TK International

1998 > 2023 Celebrating 25 years of trusted service.



## Elm Walk Hampstead NW3

On the market for the first time in nearly fifty-seven years when the land was originally purchased, a rarely available low built, lateral two storey contemporary house of some 4,005 sq ft set on a site of nearly a 1/3rd acre and providing bright four/five bedroom family accommodation. The house was built to a high specification using the very best materials including the finest marbles and hardwoods.

On the ground floor, one enters the house through a gracious marble floored entrance lobby, leading into the light filled 39'2 split level reception room which has full height sliding doors leading onto the rear garden. There is a 21' x 15' master bedroom suite with en-suite dressing room and bathroom, which was originally used as a large family room also with access to the garden. There is also a kitchen/breakfast room and utility room as well as a guest WC and double width garage.

The first floor provides a large bright landing, a principle bedroom with en-suite bathroom and three further double bedrooms, a family bathroom and an en-suite shower-room to bedroom four.

The rear south facing private garden is renowned and fabled as one of the most beautifully maintained gardens in the area, with magnificent flowering borders, specimen trees and plants together with a magnificent manicured lawn. The house is discretely set back from the road behind a four/five car driveway and is located on one of the prime cul-de-sacs off West Heath Road.

**£7,500,000**

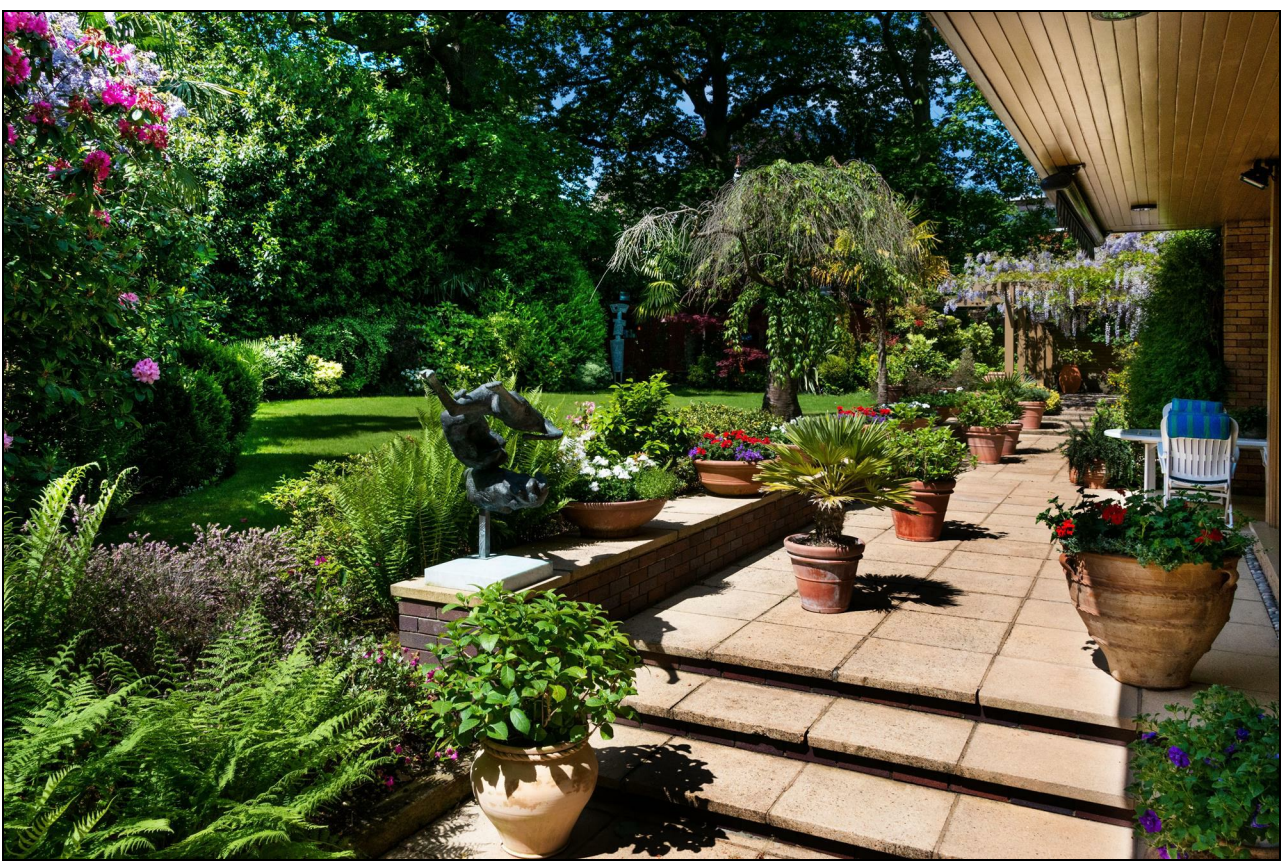
**SOLE AGENT**

**Freehold**






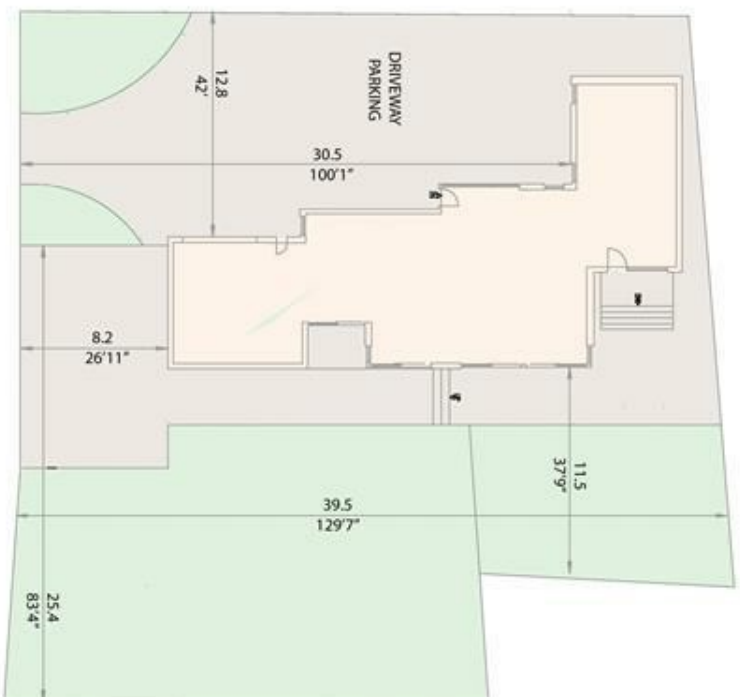







  
 ELM WALK
   
 LONDON NW3
   
 Gross internal area = 372 sq. metres
   
 (Including Void) 4005 sq. feet

SITE PLAN



FIRST FLOOR



GROUND FLOOR

